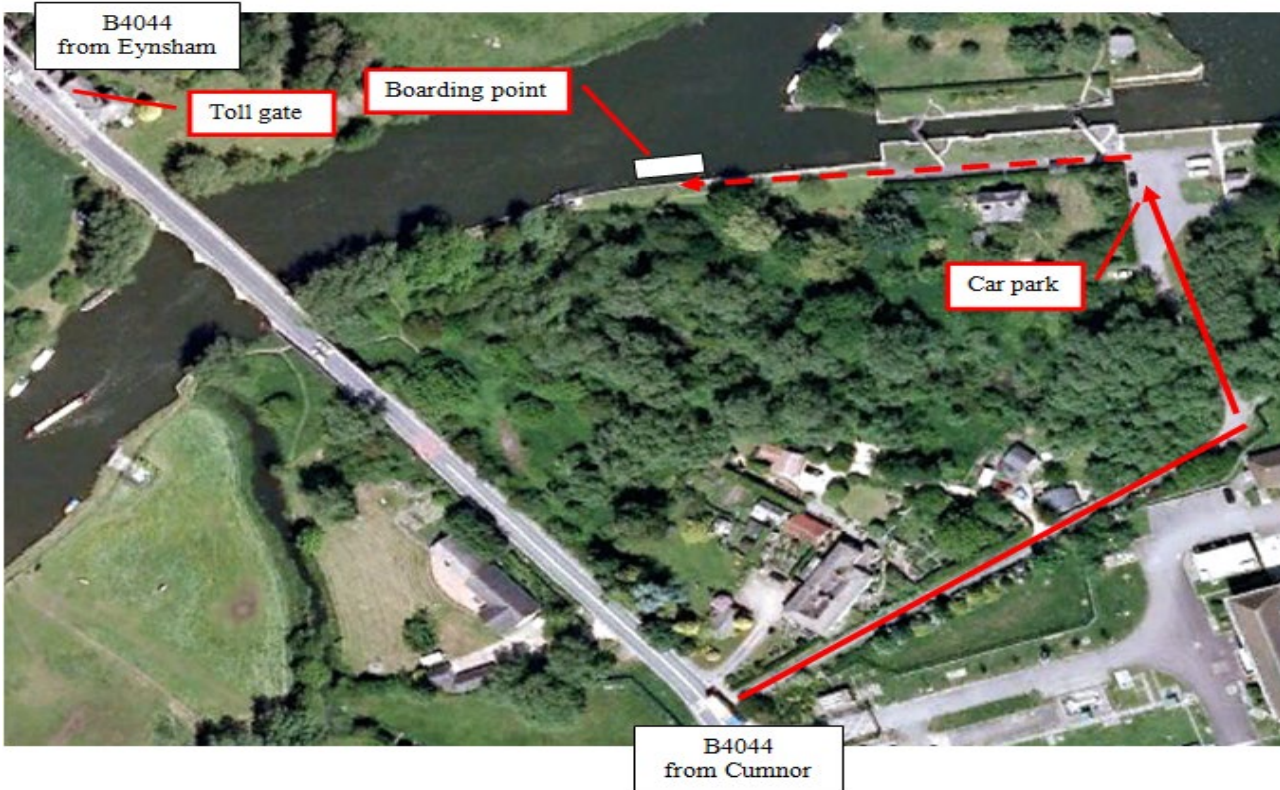


Rivertime Boat Trust – Eynsham Cruise

Eynsham Lock - OX29 4BY

Review date: Reviewed February 2020 by Lucy Herbert

Next review February 2021



The lock access lane from the Eynsham direction of the B4044



We recommend you visit the site before turning up for the first time as there are a few turnings within proximity of each other. The lock access lane is marked with a public footpath sign and a red post box.

The lane is shared so please drive with care. If the gate is locked, your skipper will be at the boarding point. Please check with the duty Lock Keeper before reversing minibuses along the red dotted line.

If you are running late on the day, please call your daily skipper or Senior Skipper, Lucy Herbert, on 07599 295 544

Directions from A40;

At the roundabout, take the B4449 towards Eynsham. Go straight over first roundabout. At the second roundabout take the first exit onto the B4044 towards Swinford. Go past the Talbot Inn on your left and over toll bridge which will cost a car driver 5 pence. The turning to the lock is on your left 225 metres after the toll bridge.

Directions from Cumnor;

Take the B4017 to Farmoor then left onto the B4044 to Swinford. Turn right immediately after on the Swinford Water Treatment Works about 125 metres before the toll bridge.