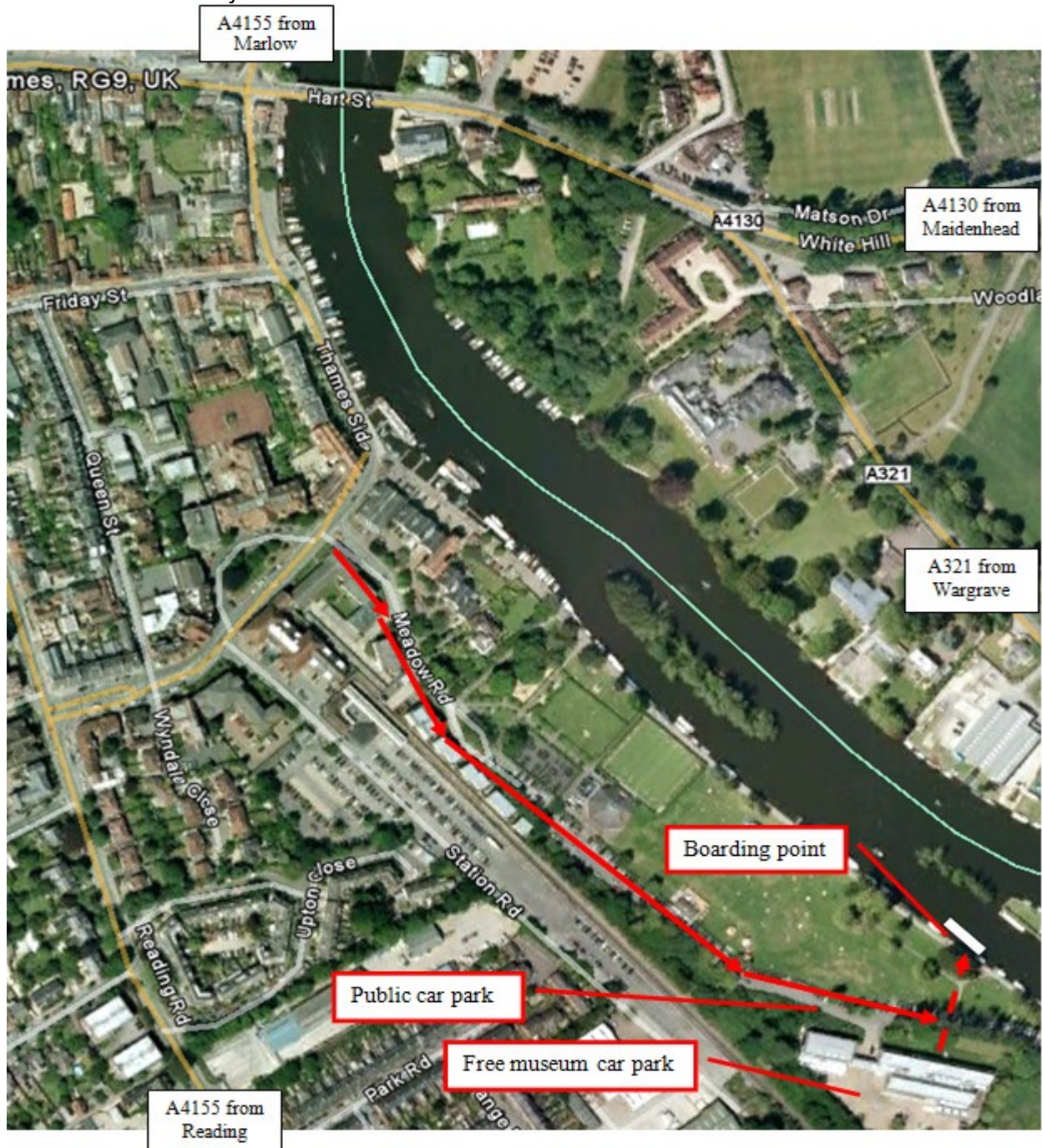


Rivertime Boat Trust – Henley-on-Thames Cruise

The River & Rowing Museum jetty, Mill Meadows RG9 1BF

Review date: Reviewed February 2020 by Lucy Herbert

Next review February 2021



Please note; if you have a weekend booking check for local events as traffic into Henley can get congested.

If you are running late call your daily skipper (or senior skipper, Lucy on 07599 295 544) We may not be able to overstay our time on the jetty.

Directions from Maidenhead or Wargrave; Cross Henley Bridge and take the first left, by the Angel pub, into Thames Side. After the right bend, away from the river, take the first left into Meadow Road and continue all the way until you reach The River and Rowing Museum (large wooden building) on the right.

Directions from Reading/Caversham on the A4155; turn right into Station Road then right into Meadow Road and continue ahead to the Rowing Museum.

Parking; There are two blue badge minibus spaces directly in front of the main pedestrian entrance to the museum. The red dotted line on the map marks the pathway from these spaces to the boarding point. When space is available, the museum permits free parking for our guests in their car park, which opens between 10-5pm. An exit code will need to be obtained from reception before returning to your car.