

# Rivertime Boat Trust - Reading Cruise

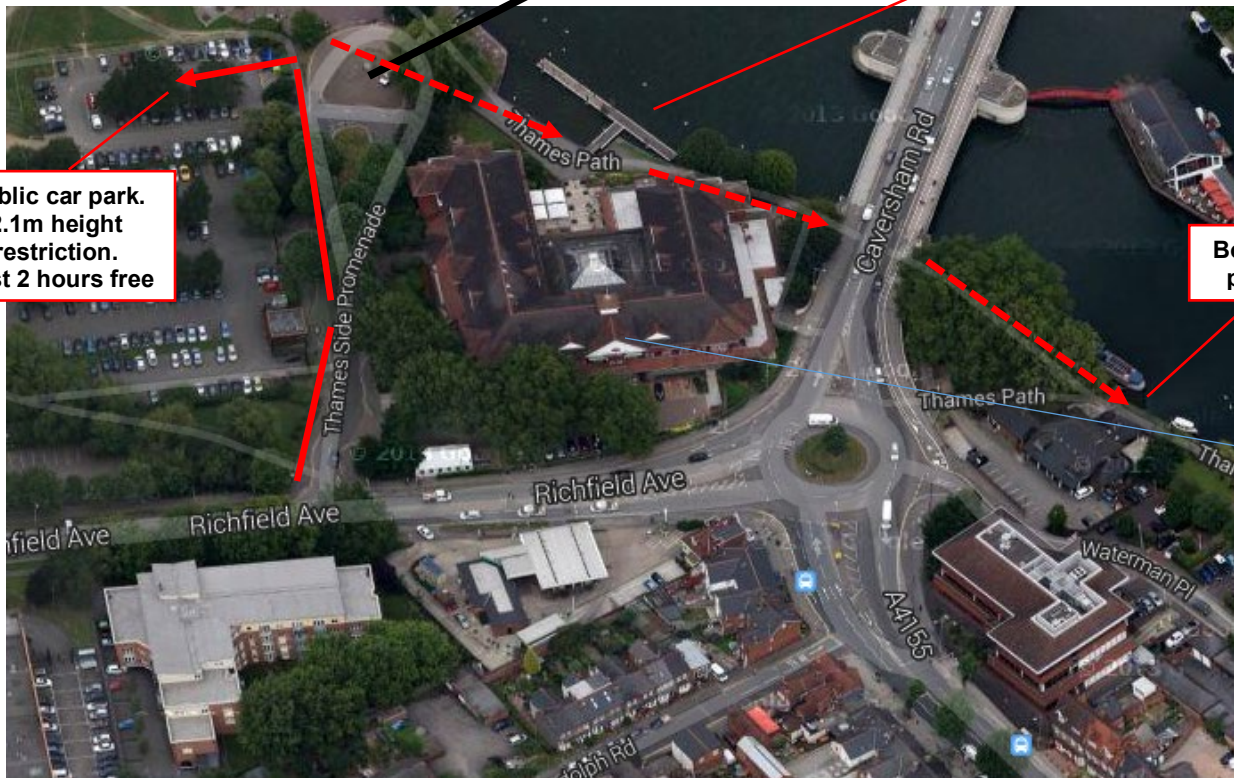
Caversham Pier, behind Crowne Plaza Hotel – RG1 8BD

Review date: Reviewed February 2020 by Lucy Herbert



Disabled parking bays for minibuses

Caversham Pier Boarding point 1



Public car park. 2.1m height restriction. First 2 hours free

Boarding point 2

Crowne Plaza Hotel RG1 8BD

**THE CROWNE PLAZA HOTEL AND THAMES RIVER CRUISE HAVE NO INVOLVEMENT WITH THE BOOKING.**

If you are running late for your trip, please call your daily skipper (or Senior Skipper Lucy Herbert on 07599 295 544) We may not be able to overstay our allotted time on the jetty.

The fixed red line marks the vehicular route and the dotted red line is the pedestrian route to the boarding points.