

Joining instructions – Eynsham Cruise

Eynsham Lock - OX29 4BY

what3words App – very useful for finding exact locations such as:

The turning off the B044 - *commuted.leaned.attention*

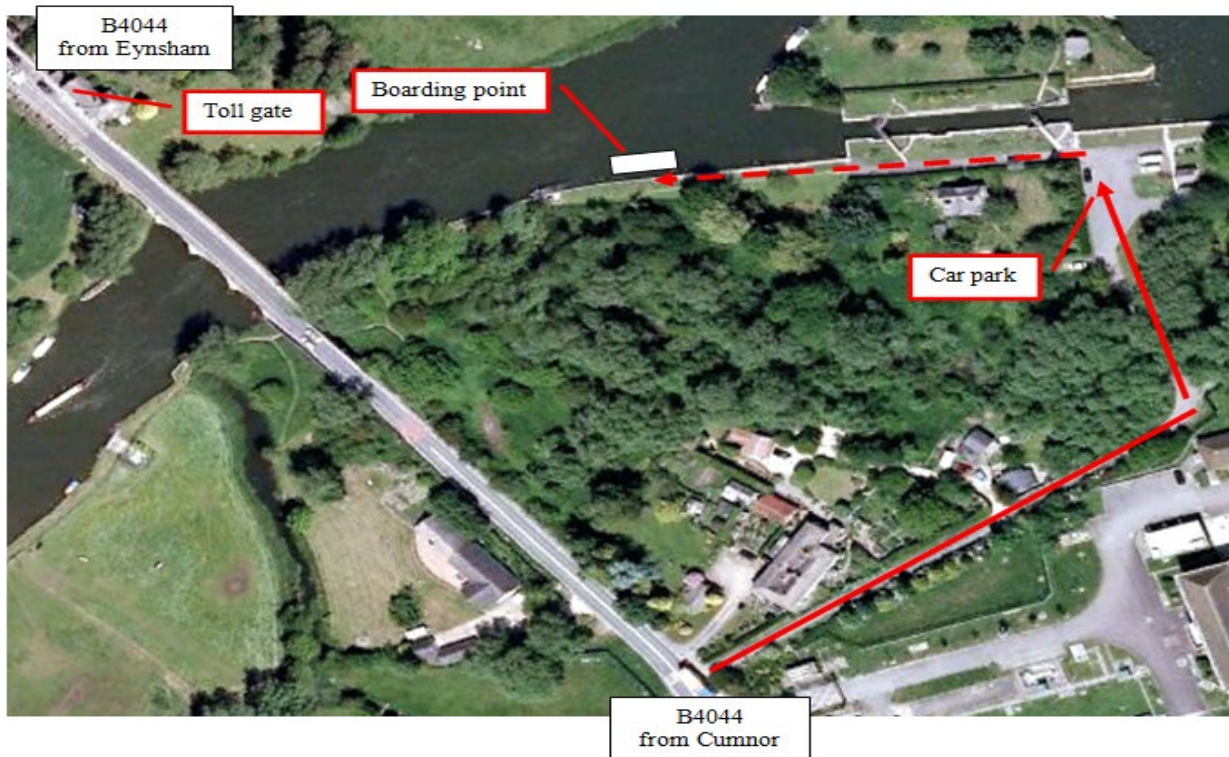
'Rivertime' boarding point - *currently.swim.noises*

We strongly advise you visit the site prior to your first visit.

PLEASE NOTE: Eynsham Lock car park has limited space. If you require more than 2 parking spaces, please speak to Operations Manager, Lucy Herbert, at the time of booking.

skipper@rivertimeboattrust.org.uk / 07599295544

Your skipper Mobile number..... will be waiting with the boat ready to begin boarding 20 minutes before the trip start time.



Directions from A4:

At the roundabout, take the B4449 towards Eynsham. Go straight over first roundabout. At the second roundabout take the first exit onto the B4044 towards Swinford. Go past the Talbot Inn on your left and over Swinford toll bridge which will cost a car driver 5p. The turning to the lock is on your left 225 metres after the toll bridge. There is a public footpath sign and a red post box at the top of the lane.



Directions from Cumnor:

Take the B4017 to Farmoor, then left onto the B4044 to Swinford. Turn right immediately after the Swinford Water Treatment Works, about 125 metres before the toll bridge. There is a public footpath sign and a red post box at the top of the lane.



The lane is shared so please drive with care. Before reversing along the red dotted line, please check with the duty lock keeper.